

Aegean Tastes And Tales



Athens Roundtrip



Expedition Type Epicurean	Yacht World Traveller	Embark/Debark Jun 19 - Jun 27, 2027	Duration 8 nights
------------------------------	--------------------------	--	----------------------

The wonders of Greece and Turkey beckon across culinary adventures and explorations of wine. Discover the enchanting donkeys that are Hydra’s primary means of transport, as this island is entirely vehicle free. Experience Greek culinary culture dating back millennia on a flavorful journey of beer, bread and yogurt made by skilled artisans in Mykonos. A late departure from Kusadasi lets you experience deeper immersions, trekking the ruins of Ephesus, one of the Seven Wonders of the Ancient World. In Bodrum, immerse yourself in lively nightlife and explore the historic Castle of St. Peter.



Itinerary

Day 1	Sat Jun 19	Docking Port	Piraeus (Athens), Greece	Departs: 9 PM
Day 2	Sun Jun 20		Hydra, Greece	Arrives: 8 AM Departs: 9 PM
Day 3	Mon Jun 21		Mykonos, Greece	Arrives: 8 AM Departs: 8 PM
Day 4	Tue Jun 22		Kusadasi (Ephesus), Turkey	Arrives: 8 AM Departs: 10 PM
Day 5	Wed Jun 23		Bodrum, Turkey	Arrives: 9 AM Departs: 11 PM
Day 6	Thu Jun 24		Rhodes, Greece	Arrives: 9 AM Departs: 8 PM
Day 7	Fri Jun 25		Agios Nikolaos (Crete), Greece	Arrives: 9 AM Departs: 7 PM
Day 8	Sat Jun 26		Milos, Greece	Arrives: 8 AM Departs: 9 PM
Day 9	Sun Jun 27	Anchor Port	Piraeus (Athens), Greece	Arrives: 8 AM

Suites & Staterooms

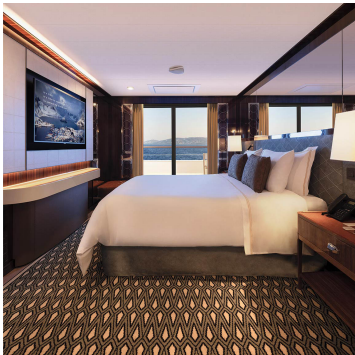
After an inspiring day of exploring, the luxurious comfort of your suite or stateroom offers the perfect place to unwind and relax. Take in a final view of the seascape from the comfort of your balcony or from your panoramic window before retiring for the evening. Awaken fully refreshed and begin your day by pouring yourself a cup of Nespresso Coffee or Kusmi Tea and indulging in lavish L'OCCITANE amenities. Guests in suites enjoy additional luxuries such as an expanded room service menu, a walk-in closet and our coveted butler service.



Navigator Suite (Ns)

Deck: 5,6
465 SQ FT

Best Available Fare
\$12,999
per guest



Discovery Suite (Ds)

Deck: 5
445 SQ FT

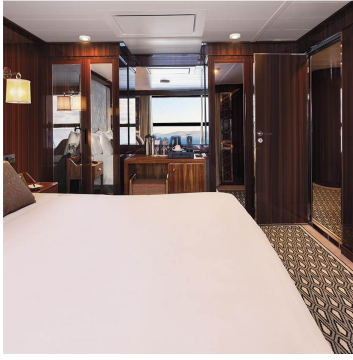
Best Available Fare
\$12,199
per guest



Journey Suite (Js)

Deck: 5,6
382 SQ FT

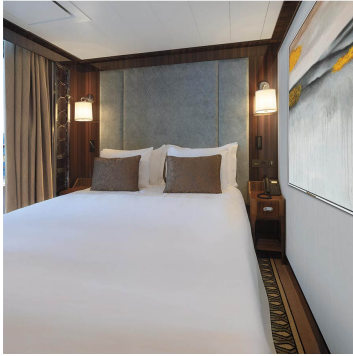
Best Available Fare
\$11,299
per guest



Horizon Deluxe Stateroom (E1)

Deck: 6
300 SQ FT

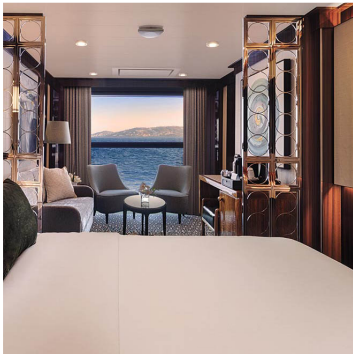
Best Available Fare
\$9,499
per guest



Veranda Deluxe Stateroom (E2)

Deck: 6
300 SQ FT

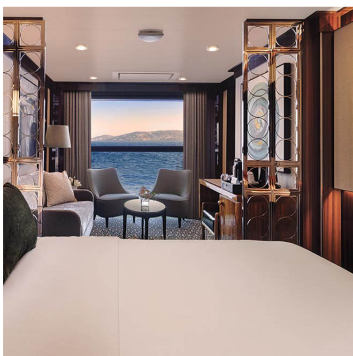
Best Available Fare
\$9,499
per guest



Horizon Stateroom (A1)

Deck: 5,6
270 SQ FT

Best Available Fare
\$7,499
per guest



Horizon Stateroom (A2)

Deck: 5,6
270 SQ FT

Best Available Fare
\$7,299
per guest



Veranda Stateroom (B1)

Deck: 5,6
270 SQ FT

Best Available Fare
\$6,799
per guest



Veranda Stateroom (B2)

Deck: 5,6
270 SQ FT

Best Available Fare
\$6,599
per guest



Adventure Oceanview Stateroom (Ao)

Deck: 3
183 SQ FT

Best Available Fare
\$5,999
per guest

Cruise Fares are per guest, cruise-only, based on double occupancy, and are subject to change at any time without notice. Government Taxes and Fees of \$440 per guest are included in the fares shown and are not eligible for special offers or promotional savings.