

Highlands & Emerald Isles



London to London



Expedition Type Cultural	Yacht World Navigator	Embark/Debarck May 1 - May 11, 2026	Duration 10 nights
-----------------------------	--------------------------	--	-----------------------

A late-night stay in London offers the perfect opportunity to explore its iconic landmarks and vibrant cultural scene. In Edinburgh, delve into Scottish tradition with a bagpipe lesson led by a renowned piper, followed by a guided tasting of fine whisky hosted by a Society Whisky Ambassador. Discover the dynamic spirit of Belfast, where historic streets and a thriving culinary scene reveal the city's evolving character. In Dublin, experience Ireland's literary heritage, Georgian architecture, and warm hospitality. Journey to Waterford, where Viking ancestry and masterful craftsmanship meet at the House of Waterford Crystal. Along Cornwall's scenic coast, the harbor town of Fowey invites exploration through its art, literature, and local traditions, famously inspiring author Daphne du Maurier. Each destination along this voyage weaves together history, culture, and unforgettable experiences.



Itinerary

Day 1	Fri May 1	London (Tower Bridge), England	
Day 2	Sat May 2	London (Tower Bridge), England	Departs: 2 AM
Day 3	Sun May 3	Leith (Edinburgh), Scotland	Arrives: 12 PM
Day 4	Mon May 4	Leith (Edinburgh), Scotland	Departs: 3 PM
Day 5	Tue May 5	At Sea	At Sea
Day 6	Wed May 6	Belfast, Northern Ireland	Arrives: 12 PM Departs: 10 PM
Day 7	Thu May 7	Dublin, Ireland	Arrives: 7 AM Departs: 6 PM
Day 8	Fri May 8	Waterford, Ireland	Arrives: 8 AM Departs: 4 PM
Day 9	Sat May 9	Fowey (Cornwall), England	Arrives: 10 AM Departs: 7 PM
Day 10	Sun May 10	At Sea	At Sea
Day 11	Mon May 11	Anchor Port London (Tower Bridge), England	Arrives: 8 AM

Suites & Staterooms

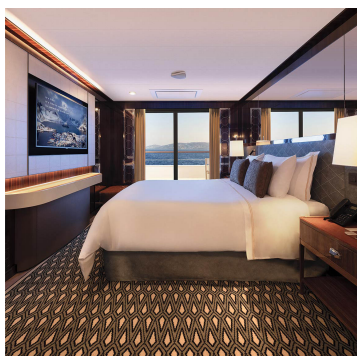
After an inspiring day of exploring, the luxurious comfort of your suite or stateroom offers the perfect place to unwind and relax. Take in a final view of the seascape from the comfort of your balcony or from your panoramic window before retiring for the evening. Awaken fully refreshed and begin your day by pouring yourself a cup of Nespresso Coffee or Kusmi Tea and indulging in lavish L'OCCITANE amenities. Guests in suites enjoy additional luxuries such as an expanded room service menu, a walk-in closet and our coveted butler service.



Navigator Suite (Ns)

Deck: 5,6
465 SQ FT

Best Available Fare
\$14,499
per guest



Discovery Suite (Ds)

Deck: 5
445 SQ FT

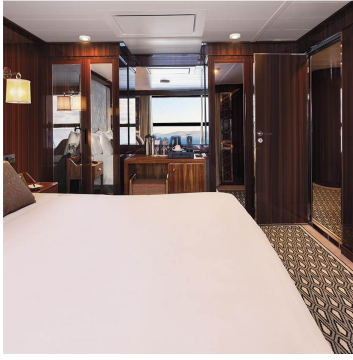
Best Available Fare
Call for Fares
per guest



Journey Suite (Js)

Deck: 5,6
382 SQ FT

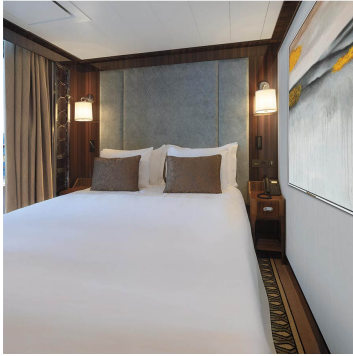
Best Available Fare
Call for Fares
per guest



Horizon Deluxe Stateroom (E1)

Deck: 6
300 SQ FT

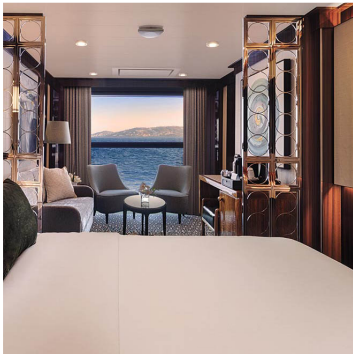
Best Available Fare
\$7,499
per guest



Veranda Deluxe Stateroom (E2)

Deck: 6
300 SQ FT

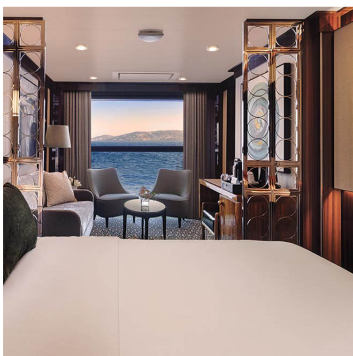
Best Available Fare
\$7,999
per guest



Horizon Stateroom (A1)

Deck: 5,6
270 SQ FT

Best Available Fare
\$6,999
per guest



Horizon Stateroom (A2)

Deck: 5,6
270 SQ FT

Best Available Fare
Call for Fares
per guest



Veranda Stateroom (B1)

Deck: 5,6
270 SQ FT

Best Available Fare
\$6,499
per guest



Veranda Stateroom (B2)

Deck: 5,6
270 SQ FT

Best Available Fare
\$6,299
per guest



Adventure Oceanview Stateroom (Ao)

Deck: 3
183 SQ FT

Best Available Fare
Call for Fares
per guest

Cruise Fares are per guest, cruise-only, based on double occupancy, and are subject to change at any time without notice. Government Taxes and Fees of \$550 per guest are included in the fares shown and are not eligible for special offers or promotional savings.