

Nordic Ice & Isles



Bergen to Reykjavik



Expedition Type Cultural	Yacht World Voyager	Embark/Debark May 27 - Jun 5, 2027	Duration 9 nights
-----------------------------	------------------------	---------------------------------------	----------------------

Enchanting isles and sweeping fjords spark the imagination on this immersive adventure. Staying overnight in the picturesque village of Seyðisfjörður, there's time to explore the beautiful Skalanes Nature reserve or relax at the nearby Vök baths, a timeless Icelandic tradition of bathing in geothermal pools. On Grímsey Island, look for the puffins that call it home and make your way to the Arctic Circle demarcation stone. Although remote and a popular setting for Nordic noir, Siglufjörður is also home to a lively Folk Music Center, maritime history and contrasting landscapes ranging from black-sand beaches to snow-capped mountains.



Itinerary

Day 1	Thu May 27	Docking Port	Bergen, Norway	Departs: 5 PM
Day 2	Fri May 28		Lerwick (Shetland Islands), Scotland	Arrives: 11 AM Departs: 6 PM
Day 3	Sat May 29	At Sea	At Sea	
Day 4	Sun May 30		Seyðisfjörður, Iceland	Arrives: 9 AM
Day 5	Mon May 31		Seyðisfjörður, Iceland	Departs: 4 PM
Day 6	Tue Jun 1		Grímsey Island, Iceland	Arrives: 7 AM Departs: 1 PM
Day 7	Tue Jun 1		Siglufjörður, Iceland	Arrives: 5 PM
Day 8	Wed Jun 2		Siglufjörður, Iceland	Departs: 1 AM
Day 9	Wed Jun 2		Akureyri, Iceland	Arrives: 7 AM Departs: 6 PM
Day 10	Thu Jun 3		Isafjörður, Iceland	Arrives: 9 AM Departs: 6 PM
Day 11	Fri Jun 4		Grundarfjörður, Iceland	Arrives: 8 AM Departs: 7 PM
Day 12	Sat Jun 5	Anchor Port	Reykjavík, Iceland	Arrives: 8 AM

Suites & Staterooms

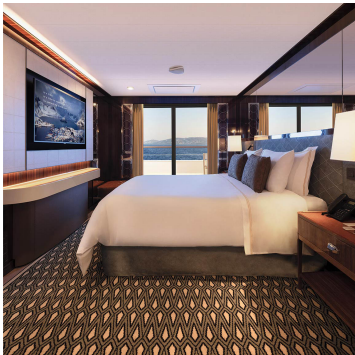
After an inspiring day of exploring, the luxurious comfort of your suite or stateroom offers the perfect place to unwind and relax. Take in a final view of the seascape from the comfort of your balcony or from your panoramic window before retiring for the evening. Awaken fully refreshed and begin your day by pouring yourself a cup of Nespresso Coffee or Kusmi Tea and indulging in lavish L'OCCITANE amenities. Guests in suites enjoy additional luxuries such as an expanded room service menu, a walk-in closet and our coveted butler service.



Navigator Suite (Ns)

Deck: 5,6
465 SQ FT

Best Available Fare
\$14,099
per guest



Discovery Suite (Ds)

Deck: 5
445 SQ FT

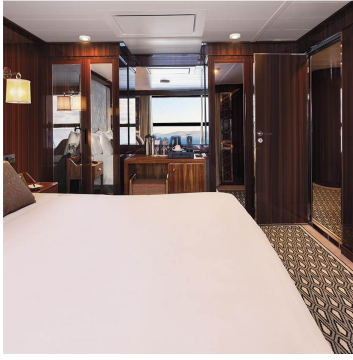
Best Available Fare
\$13,299
per guest



Journey Suite (Js)

Deck: 5,6
382 SQ FT

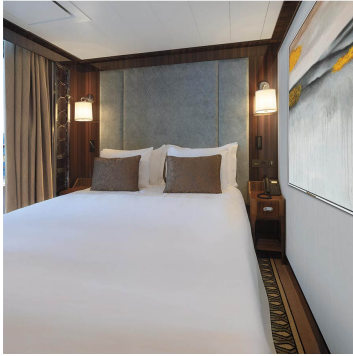
Best Available Fare
\$12,399
per guest



Horizon Deluxe Stateroom (E1)

Deck: 6
300 SQ FT

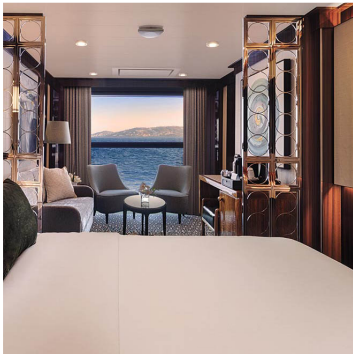
Best Available Fare
\$10,599
per guest



Veranda Deluxe Stateroom (E2)

Deck: 6
300 SQ FT

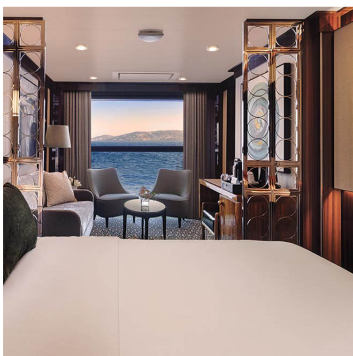
Best Available Fare
\$10,599
per guest



Horizon Stateroom (A1)

Deck: 5,6
270 SQ FT

Best Available Fare
\$8,299
per guest



Horizon Stateroom (A2)

Deck: 5,6
270 SQ FT

Best Available Fare
\$8,099
per guest



Veranda Stateroom (B1)

Deck: 5,6
270 SQ FT

Best Available Fare
\$7,599
per guest



Veranda Stateroom (B2)

Deck: 5,6
270 SQ FT

Best Available Fare
\$7,399
per guest



Adventure Oceanview Stateroom (Ao)

Deck: 3
183 SQ FT

Best Available Fare
\$6,599
per guest

Cruise Fares are per guest, cruise-only, based on double occupancy, and are subject to change at any time without notice. Government Taxes and Fees of \$495 per guest are included in the fares shown and are not eligible for special offers or promotional savings.