

Tastes Of Coasts & Vine



Lisbon to Bordeaux



Expedition Type Epicurean	Yacht World Navigator	Embark/Debarck May 7 - May 14, 2027	Duration 7 nights
------------------------------	--------------------------	--	----------------------

Mediterranean artistry comes to life as you delve into the culinary and cultural traditions of Spain, Portugal and France. Porto's rich, artistic heritage beckons with a river cruise leading to a port wine tasting with your fellow connoisseurs. From La Coruña, make a trek to Santiago de Compostela, a beautiful cathedral — also a UNESCO World Heritage Site — to which many make a pilgrimage. A late night in Bilbao calls for a taste of its vibrant history and the celebrated Basque culinary tradition of pintxos. From its famed vineyards to its UNESCO-listed city, the grand allure of Bordeaux calls out with an overnight stay.



Itinerary

Day 1	Fri May 7	Docking Port	Lisbon, Portugal	Departs: 6 PM
Day 2	Sat May 8		Porto, Portugal	Arrives: 10 AM Departs: 5 PM
Day 3	Sun May 9		La Coruña, Spain	Arrives: 12 PM Departs: 7 PM
Day 4	Mon May 10		Gijón, Spain	Arrives: 8 AM Departs: 6 PM
Day 5	Tue May 11		Bilbao, Spain	Arrives: 8 AM Departs: 10 PM
Day 6	Wed May 12		Saint-Jean-de-Luz, France	Arrives: 8 AM Departs: 7 PM
Day 7	Thu May 13		Bordeaux, France	Arrives: 1 PM
Day 8	Fri May 14	Anchor Port	Bordeaux, France	Arrives: 8 AM

Suites & Staterooms

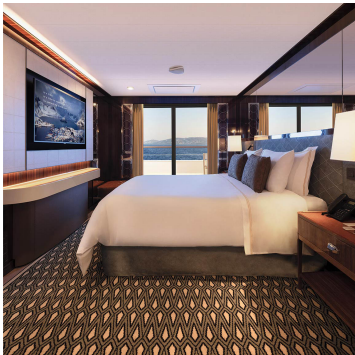
After an inspiring day of exploring, the luxurious comfort of your suite or stateroom offers the perfect place to unwind and relax. Take in a final view of the seascape from the comfort of your balcony or from your panoramic window before retiring for the evening. Awaken fully refreshed and begin your day by pouring yourself a cup of Nespresso Coffee or Kusmi Tea and indulging in lavish L'OCCITANE amenities. Guests in suites enjoy additional luxuries such as an expanded room service menu, a walk-in closet and our coveted butler service.



Navigator Suite (Ns)

Deck: 5,6
465 SQ FT

Best Available Fare
\$12,999
per guest



Discovery Suite (Ds)

Deck: 5
445 SQ FT

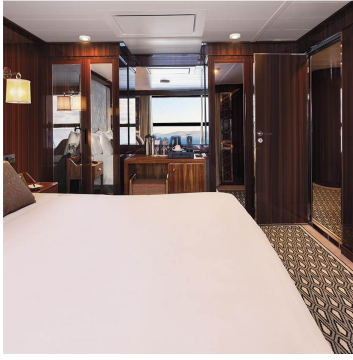
Best Available Fare
\$12,199
per guest



Journey Suite (Js)

Deck: 5,6
382 SQ FT

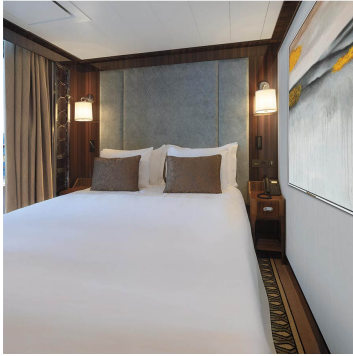
Best Available Fare
\$11,299
per guest



Horizon Deluxe Stateroom (E1)

Deck: 6
300 SQ FT

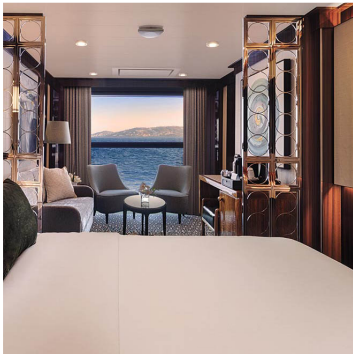
Best Available Fare
\$9,499
per guest



Veranda Deluxe Stateroom (E2)

Deck: 6
300 SQ FT

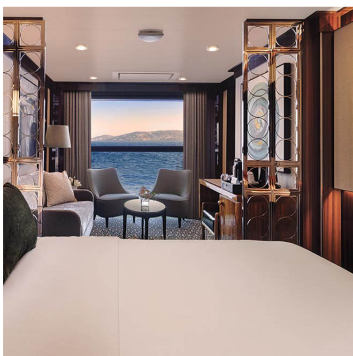
Best Available Fare
\$9,499
per guest



Horizon Stateroom (A1)

Deck: 5,6
270 SQ FT

Best Available Fare
\$7,499
per guest



Horizon Stateroom (A2)

Deck: 5,6
270 SQ FT

Best Available Fare
\$7,299
per guest



Veranda Stateroom (B1)

Deck: 5,6
270 SQ FT

Best Available Fare
\$6,799
per guest



Veranda Stateroom (B2)

Deck: 5,6
270 SQ FT

Best Available Fare
\$6,599
per guest



Adventure Oceanview Stateroom (Ao)

Deck: 3
183 SQ FT

Best Available Fare
\$5,999
per guest

Cruise Fares are per guest, cruise-only, based on double occupancy, and are subject to change at any time without notice. Government Taxes and Fees of \$385 per guest are included in the fares shown and are not eligible for special offers or promotional savings.